





## Architectural Control Committee

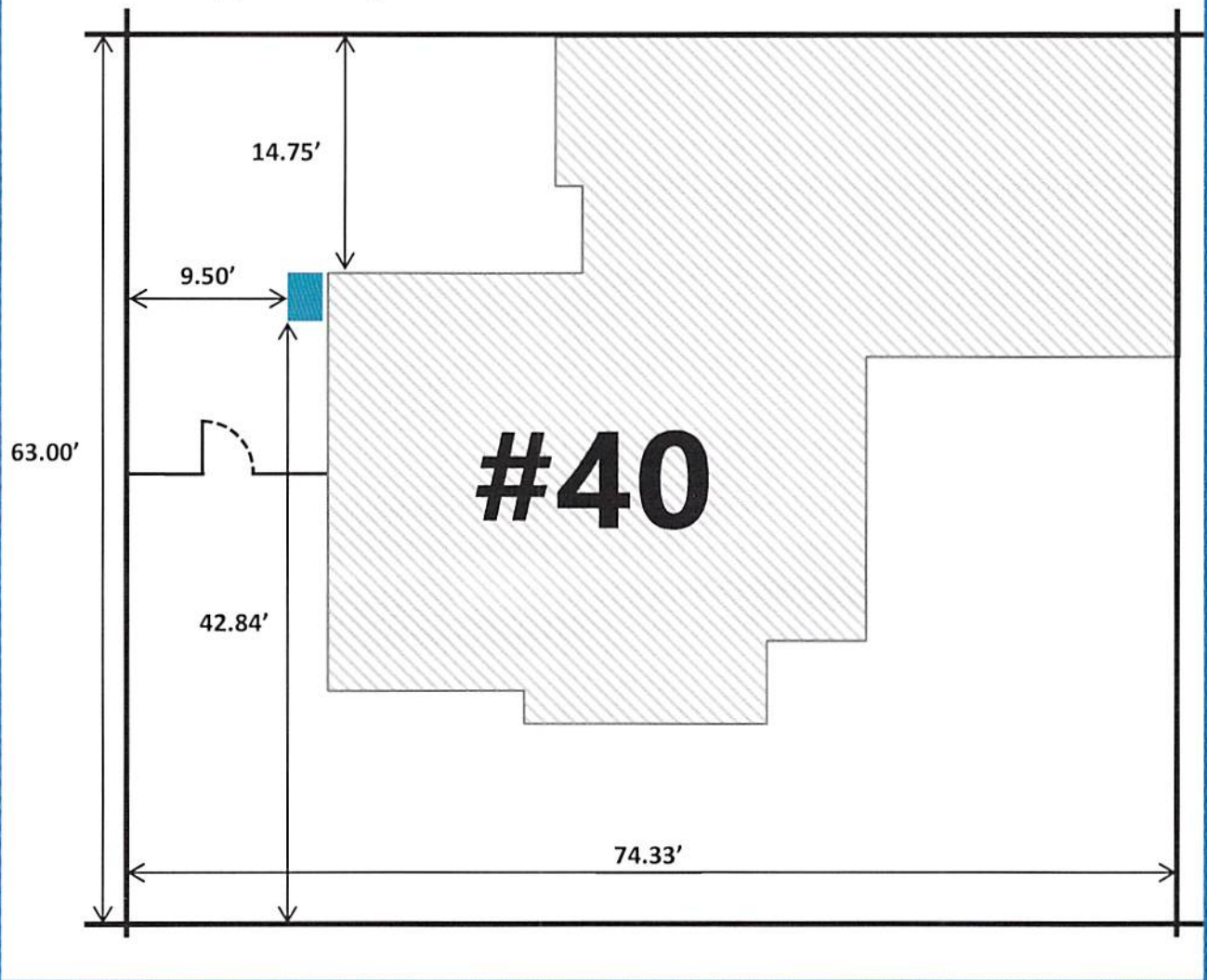
### Plan and Specification Review Determination

### PATIO, DECK, A/C, HOT TUB APPLICATION (page 2 of 5)

IMPORTANT: Include a sketch of the proposed fencing describing location on the property, dimensions and style (see item #1 of "Basic Policy for Additional Construction" on page 3). Attach additional sheets if needed.

Proposed Construction/Location  
Drawing (Property sketch):  
**Top-down view**

Trane XV19 Low-Profile Unit (3-ton)  
Height: 37"  
Width: 47"  
Depth: 18 + 6" clearance  
Sound: 43-49dB (Quietest made)





## Architectural Control Committee

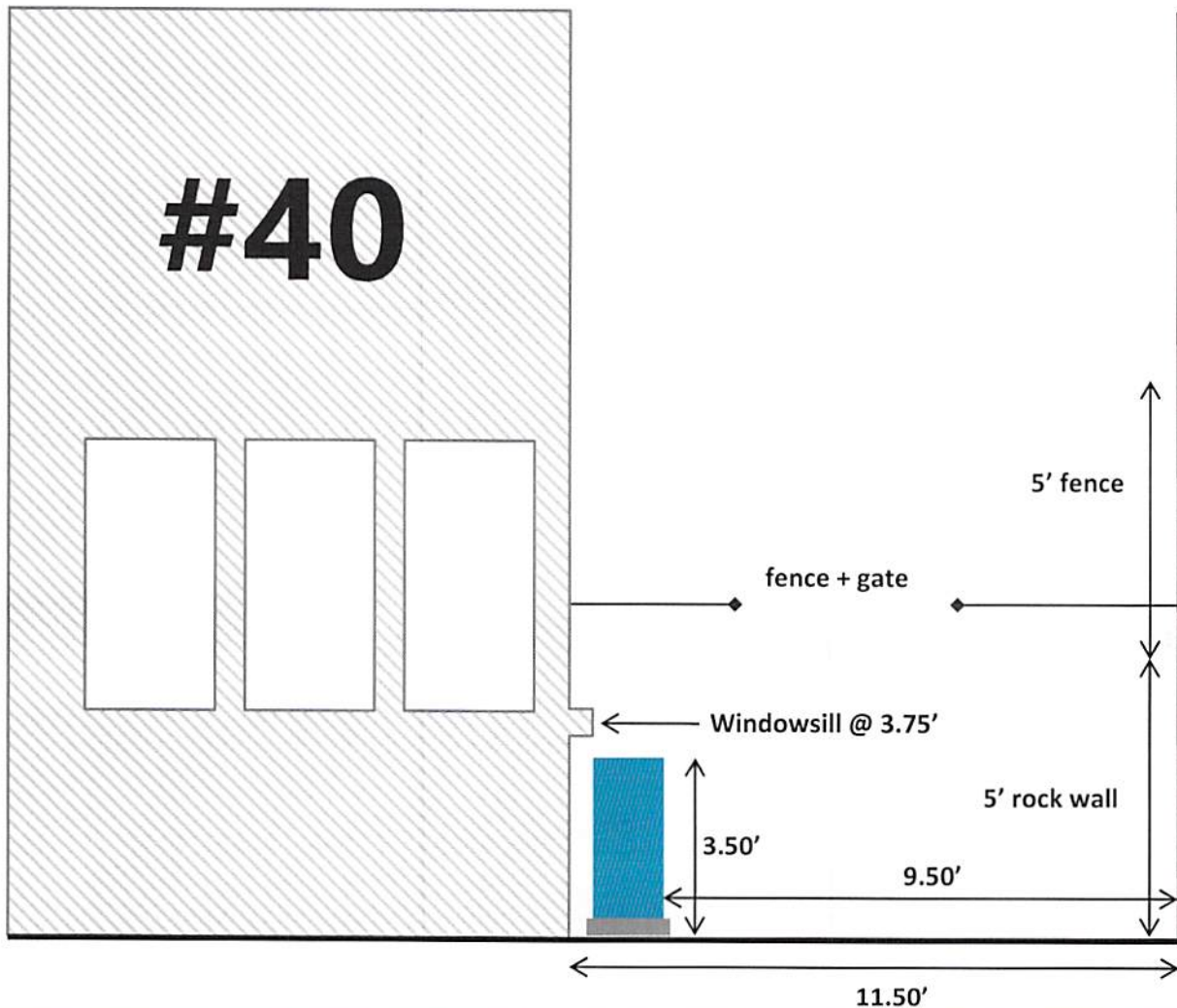
### Plan and Specification Review Determination

### PATIO, DECK, A/C, HOT TUB APPLICATION (page 3 of 5)

IMPORTANT: Include a sketch of the proposed fencing describing location on the property, dimensions and style (see item #1 of "Basic Policy for Additional Construction" on page 3). Attach additional sheets if needed.

Proposed Construction/Location  
Drawing (Property sketch):  
**Backyard facing South**

Trane XV19 Low-Profile Unit (3-ton)  
Height: 37"  
Width: 47"  
Depth: 18" + 6" clearance  
Sound: 43-49dB (Quietest made)







## Architectural Control Committee

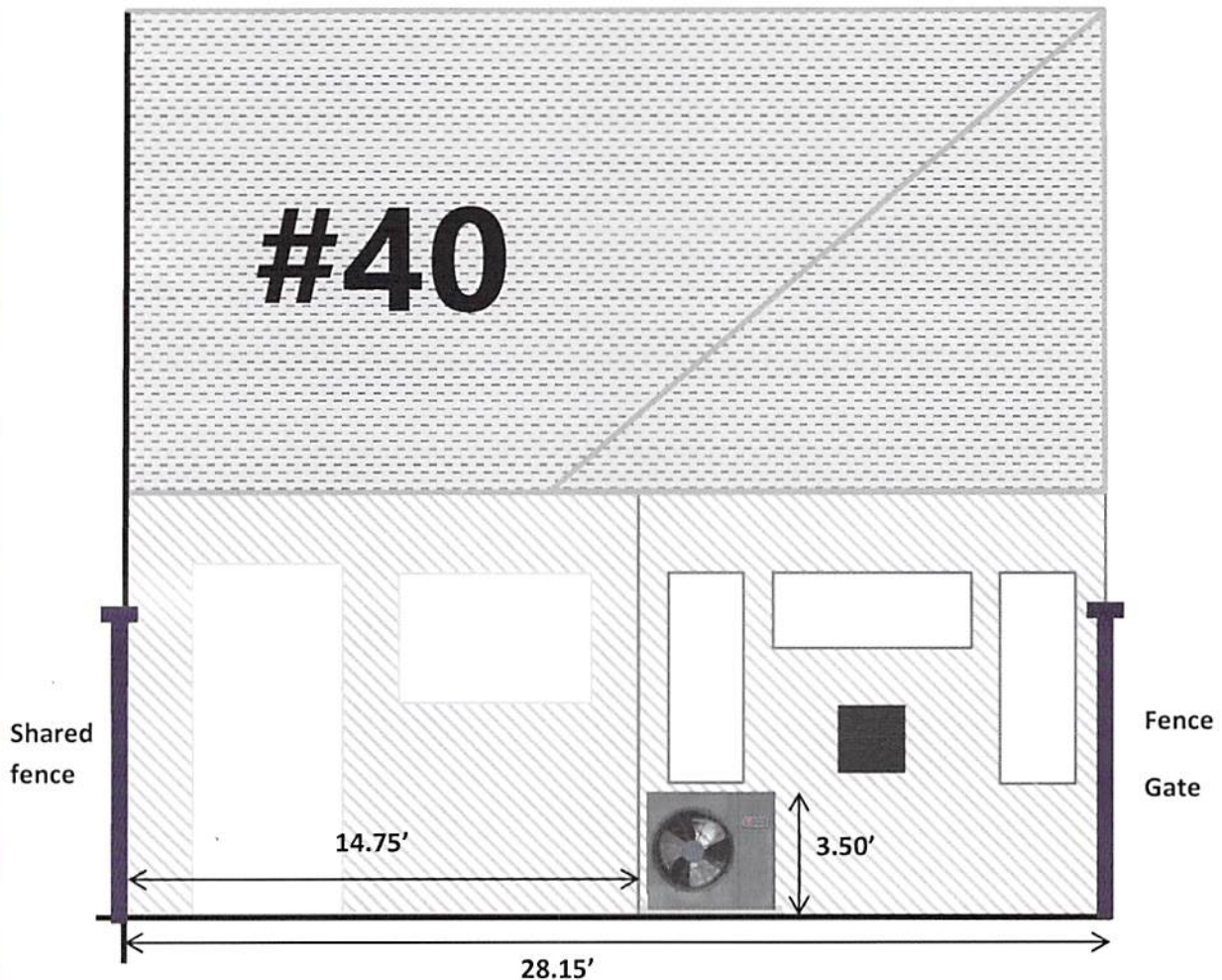
### Plan and Specification Review Determination

### PATIO, DECK, A/C, HOT TUB APPLICATION (page 4 of 5)

IMPORTANT: Include a sketch of the proposed fencing describing location on the property, dimensions and style (see item #1 of "Basic Policy for Additional Construction" on page 3). Attach additional sheets if needed.

Proposed Construction/Location  
Drawing (Property sketch):  
**Backyard facing East**

**Trane XV19 Low-Profile Unit (3-ton)**  
**Height: 37"**  
**Width: 47"**  
**Depth: 18" + 6" clearance**  
**Sound: 43-49dB (Quietest made)**





Architectural Control Committee  
Plan and Specification Review Determination  
**PATIO, DECK, A/C, HOT TUB APPLICATION** (page 5 of 5)  
Basic Policy for Additional Construction

---

**\*\*ALSO SEE THE ACC GUIDELINES\*\***

Any additional construction upon a building site must be submitted to and approved by the Architectural Control Committee prior to commencement. In the event approval has not been received, a "Stop Work Order" will be issued until such time as the property paperwork has been received and processed by the MCCA office. As part of the submittal procedure, the following information must be furnished to the ACC before the submittal is acted on:

1. Detailed information, written or printed, on type of addition that is planned for the site. This information should include exact location, finished dimensions, color, style, materials, etc.
2. An elevation drawing or a perspective drawing of the proposed additional construction sufficiently detailed to show the appearance of the addition and its relationship to the existing structure.
3. A sketch of the property showing the relationship between the proposed addition and all other adjacent structures. It is the homeowner's responsibility to locate and identify all property markers, both at the site and on the sketch included with the submittal.
4. As a matter of record, a projected completion date is requested by the owner. If any extension of the completion date is necessary, or the project is canceled/postponed, the Association Office should be notified.
5. Approved plans are subject to final inspection if deemed necessary by the Committee. All plans become the property of the Association and will be filed in the lot file. In case of changes, plans should be resubmitted to the Committee prior to construction. Variance from approved plans may be subject to change at the homeowner's expense or removal at the discretion of the Committee.

**This signature verifies that the applicant has reviewed the above policy and agrees to abide by all guidelines and terms of approval set forth on the application attached. Signature also implies "Right of Entry" for members of the ACC for the purpose of plan review.**

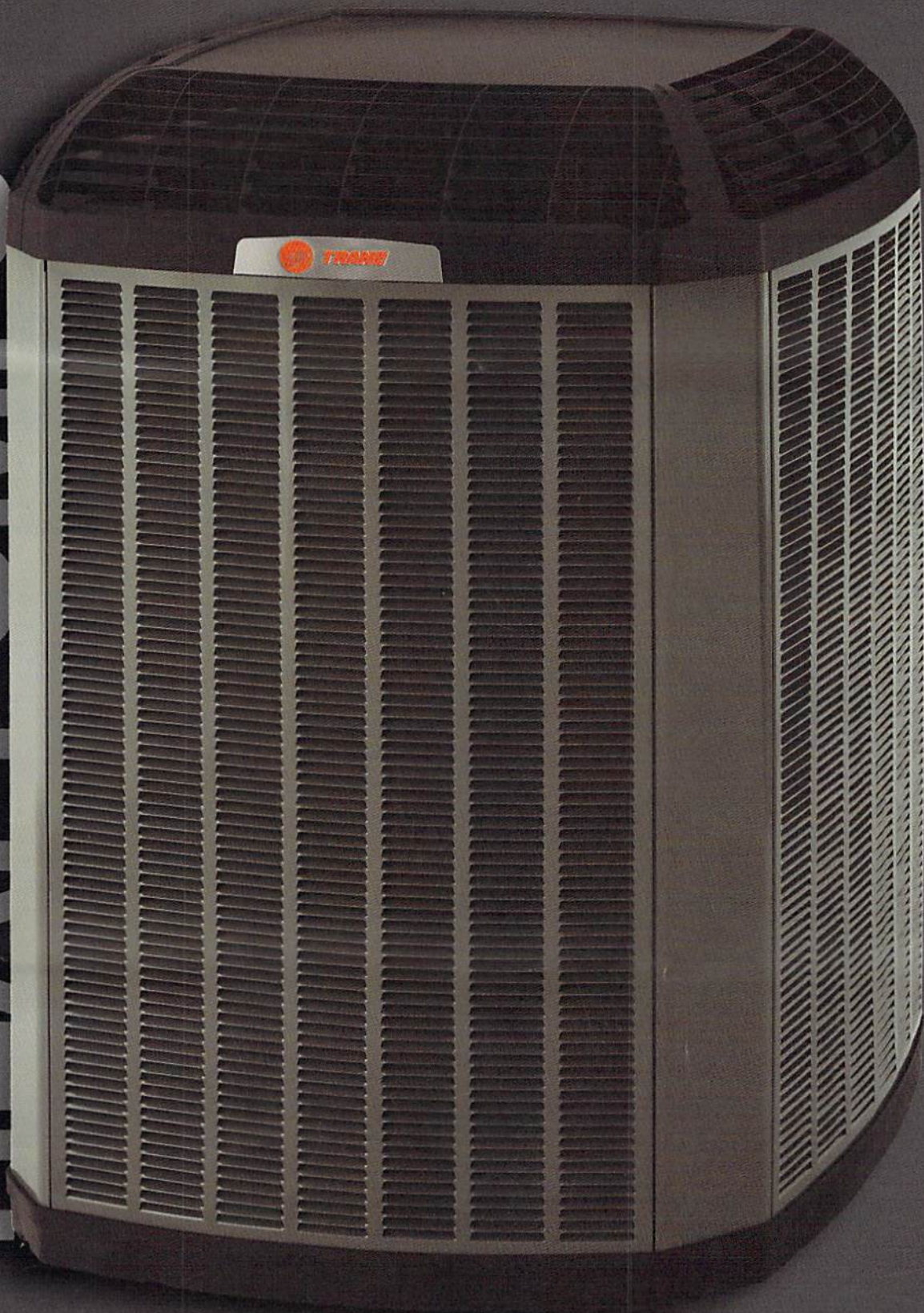
Applicant Signature

Date

☐ Owner Requests ACC Members Call Before Entering Property For Review (*discuss specifics of project, pet in yard, children at home alone, etc.* )



# HEAT PUMPS



A smart, efficient and versatile way to heat and cool your home. Trane Heat Pumps are offered at up to 20 SEER and can automatically adjust to avoid temperature swings.



<b>XV18</b>  UP TO 18 SEER 10 HSPF	<b>XV20i</b>  UP TO 21 SEER 10 HSPF	
<b>XL18i</b>  UP TO 18 SEER 9.5 HSPF	<b>XR17</b>  UP TO 17.25 SEER 9.6 HSPF	
<b>XL16i</b>  UP TO 17 SEER 9.6 HSPF	<b>XR14-16</b>  UP TO 17 SEER 9.6 HSPF	
<b>XR16 Low Profile</b>  UP TO 17 SEER 10 HSPF	<b>XV19 Low Profile</b>  UP TO 19.5 SEER 11.5 HSPF	

**XV20i VARIABLE SPEED**


## MORE STAGES = MORE COMFORT AND EFFICIENCY.

Staging refers to a heat pump's ability to run at less than its maximum capacity in order to increase comfort levels and boost efficiency.

For example, two-stage systems offer better comfort and higher efficiency (SEER ratings) than single-stage systems, while Trane's TruComfort™ variable speed system, with 500-750 stages, offers maximum comfort with the highest efficiency.

**WE FREEZE.  
BROIL.  
STRESS.  
DROP.  
SHOCK.  
EXPOSE.  
LISTEN.  
AND TAKE THEM  
HOME WITH US.**

## SEET™ TESTED

Every Trane system is put through some of the most extreme conditions found in nature in our SEET™ [Systems Extreme Environmental Test] lab. Put through five years of extreme wear and tear in just a few months, our products can stand up to the harshest environments imaginable.



**AMERICA'S MOST TRUSTED® HVAC BRAND  
6 CONSECUTIVE YEARS¹**



**MOST RELIABLE HEATING AND COOLING  
EQUIPMENT BRAND²**

¹Trane was named America's Most Trusted HVAC brand/system by Lifescore Research, a national research firm, based on a 2019 study of 11,000 consumers actively shopping or considering a product as compared with peer organizations of like size and complexity. Trane has received the highest numerical score for years 2015, 2016, 2017, 2018, 2019 & 2020. Your experiences may vary. Visit [lifescoreresearch.com](https://lifescoreresearch.com)

²Trane Technologies Marketing Insights. Trane Brand Consumer Survey. July 2020.

**WE'RE NOT  
THE ONLY  
ONES  
TALKING  
ABOUT  
RELIABILITY.**



## A CLOSER LOOK

### WeatherGuard™ III Top

Is not only attractive, the durable polycarbonate material provides lasting protection.

*Weather Guard III top only comes installed on XV20i and XL18i. It is an applicable accessory for the XL16 and XV18.*

### Exclusive Refrigerant Cooled Inverter

Helps keep electronics at a consistent temperature leading to improved performance and reliability.

### Climatuff® Variable Speed Compressor

Is the heart of Trane TruComfort™ technology. It automatically adjusts itself while maintaining constant and consistent comfort.

### Compressor Sound Insulators

Reduce operating sound for a quieter home environment.

### Full-Sided Galvanized Steel Louvered Panels

Protect internal components while preserving airflow efficiency.

### Powder-Paint Finish

Virtually indestructible for maximum protection against corrosion and rust, and years of reliable protection.

### WeatherGuard™ Top Kit

- Available as an accessory and aftermarket kit
- Keeps snow, rain, leaves, and debris out
- Reduces icing during severe operating conditions
- Additional protection for small children playing near unit

### Integrated Fan System

Unique blade-down design improves airflow, enhances performance and reduces sound levels.

### Exclusive All-Aluminum Spine Fin™ Woven Coil

Enhances airflow and heat transfer while resisting corrosion and leaks. They are proven far more reliable than traditional copper and aluminum coils.

### ComfortLink™ II Communicating Control Board

Powers the compressor and controls communication between components to optimize your comfort and efficiency.

### Simplified Two-Wire Connection

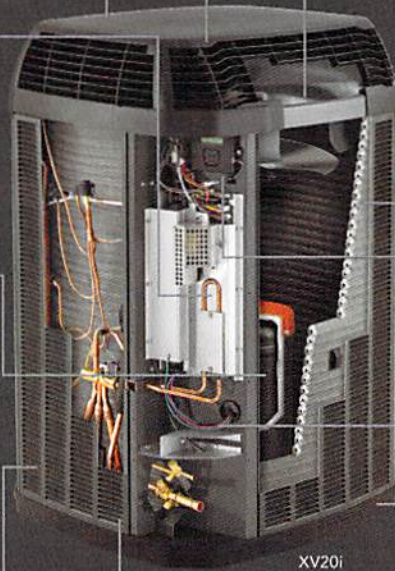
Allows for easier installation while reducing the need for structural modifications.

### DuraTuff™ Rustproof Basepan

Won't crack, corrode, rust or warp.

### WeatherGuard™ Zinc-Coated Fasteners

Provide corrosion resistance and longer life, because even minor details are what Trane reliability is all about.



The XV20i shown is for illustration purposes only. Please note that features and components may vary by model. As part of our continuous product improvement, Trane reserves the right to change specifications and design without notice.

## FEATURES

	XV20i	XV19 Low Profile	XV18	XL18i	XL16i	XR17	XR16	XR16 Low Profile	XR15	XR14
ComfortLink™ II Capability	✓	✓	✓							
Climatuff® Compressor (stages)	750	500-700**	750	2	1	2	1	1	1	1
Capacity Variability %	25 - 100*	30-100+	25 - 100*	70/100	100	70/100	100	100	100	100
Compressor Sound Insulator	✓	✓	✓						Select Models	
Overall Sound Power Level [dB(A)]	54 - 76	43-57^	54 - 76	72 - 74	70 - 74	72 - 74	70 - 75	69-74	71 - 75	71 - 76
Spine Fin™ Coil	✓	Plate fin	✓	✓	✓	✓	✓	Plate fin	✓	✓
High SEER Efficiency (up to)	21.00	19.50	18.00	18.00	17.00	17.25	17.00	17.00	15.00	14.50
High HSPF Efficiency (up to)	10.00	11.50	10.00	9.50	9.60	9.60	9.60	10.00	9.50	8.50
WeatherGuard™ top	✓		✓	✓	✓					

All Trane heat pumps have a 10 year limited warranty on the outdoor coil and all other internal functional parts (residential use).

The XV20i/XV18 and XL units have a 12 year limited warranty on the compressor, while the XV19 and XR units have a 10 year limited warranty on the compressor.

<sup>^</sup> Sound pressure levels per ARI 275

<sup>\*</sup> XV20i/XV18/XV19 vary speed in 1/10 of 1% increments.

<sup>\*\*</sup> 2 & 3 ton have 500 stages, 4 ton has 650 stages, 5 ton has 700 stages

<sup>+</sup> 2 & 3 ton are 50-100%, 4 ton is 35-100%, 5 ton is 30-100%



# TRANE DEALERS ARE AS HARD TO STOP AS A TRANE ITSELF.

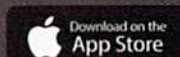
Independent Trane dealers take great pride in creating your perfect indoor environment. They are some of the most highly trained in the business and have an extensive understanding of the movement and conditioning of air and the expertise to advise, install and maintain the right system for your home.

WE ARE COMMITTED TO USING ENVIRONMENTALLY FRIENDLY PRACTICES.



## RUN YOUR HOME FROM WHEREVER LIFE TAKES YOU.

Nexia® allows you to manage your home remotely using most web-enabled mobile devices<sup>1</sup>. With just the touch of a button, you can unlock a door, turn on lights, or adjust your heating & cooling from a distance to save you energy. Simply put, Nexia gives you home automation in the most simple and accessible way. All so that you can connect with your home, even when you're not at home.



<sup>1</sup>Nexia Remote Climate Access is included with the purchase of a connected control. Adding accessories to your Nexia system requires a monthly subscription for remote access via most web-enabled smartphones and computers.

## WHY IS INDOOR AIR QUALITY IMPORTANT?

We spend 90% of our time indoors, and 70% of that is in our home<sup>2</sup> where the air can be up to 5X poorer quality than the air outside<sup>3</sup>. To help improve your indoor air, Trane offers a complete portfolio of air filtration equipment for whole home solutions for new and existing units.



## TRANE CLEANEFFECTS® AIR CLEANER

Utilizes patented technology to deliver cleaner air to the whole home by removing up to 99.98% of airborne particles<sup>4</sup> that pass through the re-usable filter, including 99.9% of the Influenza A (H1N1) virus<sup>5</sup>. This level of filtration makes it up to 100X more effective than a standard 1" filter<sup>6</sup>. Plus, it's the ONLY whole-home electronic air cleaner that is certified **asthma & allergy friendly**<sup>7</sup> by the Asthma & Allergy Foundation of America.



## ENERGY RECOVERY VENTILATORS (ERV)

Provide an energy-efficient way to exchange air inside your home with fresh air from outside, removing lingering odors like cooking smells while improving overall air quality.



## HUMIDIFIERS

Provide the right amount of moisture to the air throughout your home, adjusting from summer to winter.

Contact your Dealer or visit [Trane.com/Residential](http://Trane.com/Residential) to learn more.

<sup>2</sup>The National Human Activity Pattern Survey (2001) | <sup>3</sup>U.S. Environmental Protection Agency, EPA/600/6-87/002a, (1987)

<sup>4</sup>Based on 3rd party testing of particle removal efficiency down to 0.3 microns (2005)

<sup>5</sup>As reported by airmid healthgroup in ASCR092142v2 (2015) | <sup>6</sup>Assuming <1% removal rate of 0.3 - 10 micron particles



All trademarks referenced are the trademarks of their respective owners.

About Trane

Trane - by Trane Technologies (NYSE: TT), a global climate innovator - creates comfortable, energy efficient indoor environments for commercial and residential applications. For more information, visit [Trane.com](http://Trane.com) or [TraneTechnologies.com](http://TraneTechnologies.com)

© 2020 TRANE. ALL RIGHTS RESERVED. 72-1209-28 08/20